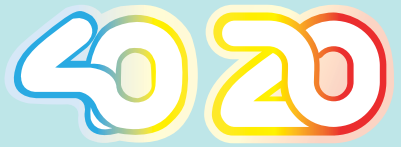
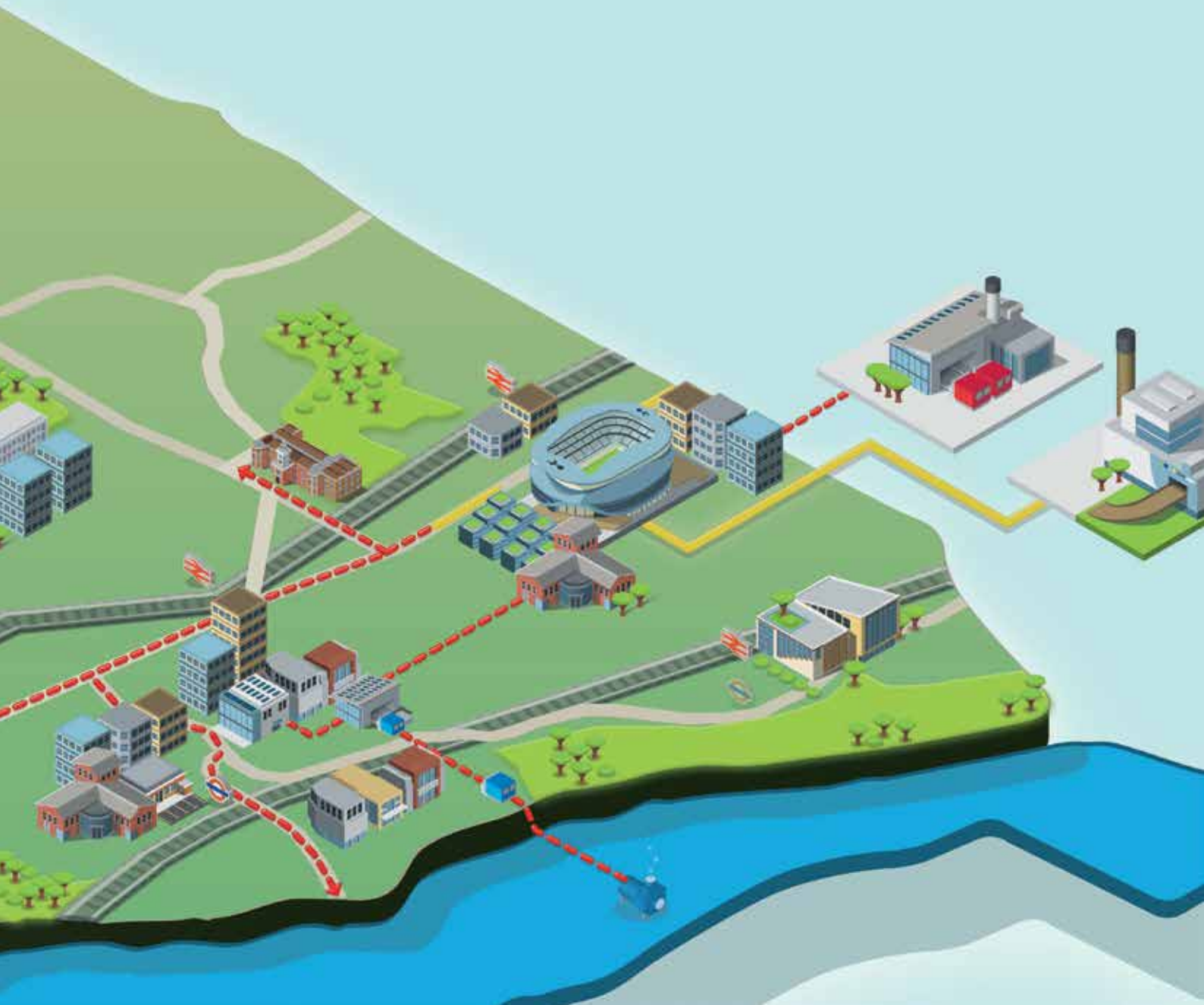


HARINGEY



An initiative of **Haringey Council**

THE HARINGEY CARBON COMMISSION 1 YEAR ON PROGRESS UPDATE



FOREWORD

When we set out to establish the Carbon Commission, we did so because we believe Haringey can be a global centre for innovation and growth in the sector. It provides the mix of population, the connectivity and the location to identify solutions to one of the biggest economic challenges facing us - climate change. That's why I am delighted to present this progress report, one year on since we launched the Carbon Commission Report.

Haringey was the first borough in the UK to sign the Friends of the Earth pledge to reduce carbon emissions by 40 per cent by 2020. It was a promise we made because we believe the costs of climate change will impact on the poorest, the hardest but critically, because we believe it provides a strong economic platform and a route to greater prosperity for all.

Some of the most exciting work that has developed this last year has been forged through collaborative work with lead businesses, social enterprises, local community organisations and universities - I would like to thank them for their commitment and partnership this past year.

We will not achieve our aspirations alone. Delivering the ambitious plans laid out by the Carbon Commission will require support from national government and more importantly, coordinated action from everyone, be that businesses, researchers, civic groups and social enterprises.

I hope you find this report a source of inspiration to come and join us on the journey to a more sustainable future for Haringey and north London.

Councillor Joe Goldberg
Cabinet Member for Finance and Carbon Reduction



THE JOURNEY SO FAR

Haringey's commitment and Carbon Commission launch 2012

Haringey has made a commitment to reduce carbon emissions by 40 per cent by 2020. As the most unequal borough in London, the challenge for Haringey is a microcosm of the global sustainability challenge – to live within environmental limits while reducing inequality.

In the current economic climate many authorities are reducing their focus on the environment agenda, believing this is an unaffordable luxury. In contrast, Haringey is committed to reducing carbon emissions in the knowledge that only by investing in the transformation of the economy will we provide the basis of future prosperity.

Haringey's Carbon Commission Report published in 2012, identifies how Haringey can take the first clear steps to becoming a centre of innovation to tackle climate change.

The recommendations include new cooperative and mutual business models for energy retrofit and energy supply, using the levers of procurement, planning and business support functions to build a low carbon economy, investment in low carbon transport and strengthening community activity.

The Carbon Commission also noted the importance of supportive national policy to fully realise the 40% reduction and associated economic benefits.

Progress so far

It has been a busy 12 months following the launch of the Carbon Commission Report and endorsement of this by Haringey Council's Cabinet and the Haringey 40:20 Steering Group.

Development activities have focused on the energy sector and turning the Commission's recommendation for a strategic low carbon heat network and a retrofitting cooperative into models and detailed business plans for mutual businesses. Community organisations have led practical action across the borough; encouraging take-up of nearly 500 Green Deal assessments as part of the DECC Green Deal Pioneer Places programme, developing a community solar share offer, and promoting collective energy saving.

The launch of our low carbon learning network

Continuing business as usual will not deliver the scale of change that is necessary to achieve our goal. That is why the Commission focused on the need for the Council to actively promote innovation and demonstration projects to effectively catalyse action across the borough. Over the last year the Council has developed a number of collaborative partnerships with the Higher Education sector, private sector and the local community, which will be publically launched in January 2014.

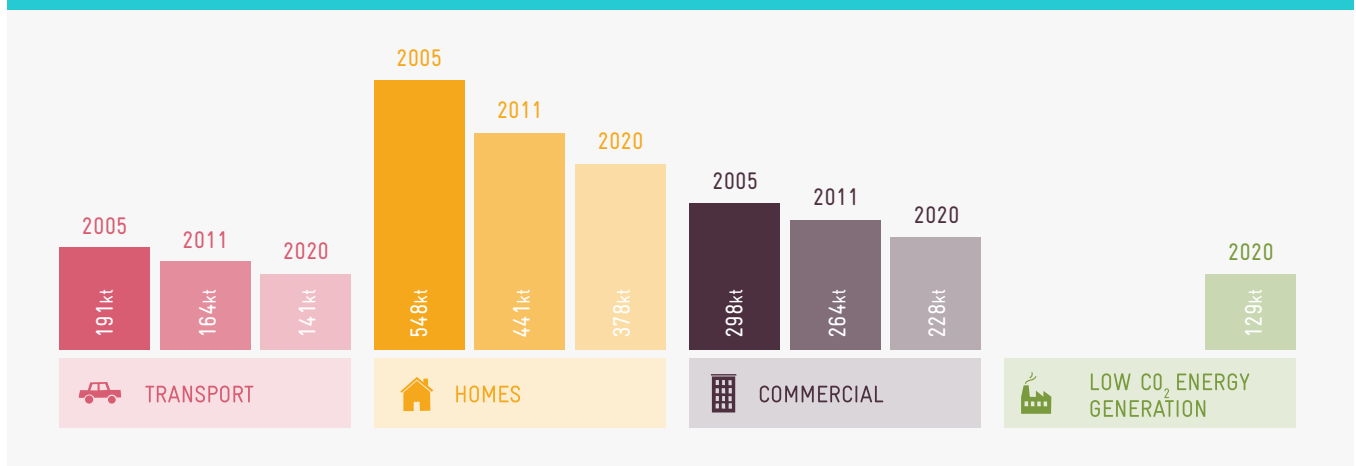
To promote the high level of innovation needed to transform the borough, we will be expanding our collaborative partnerships in 2014. We invite businesses, higher education and research organisations, funders and civil society groups to join us in this work.

About this report

In this report we highlight achievements under the five themes of activity recommended by the Carbon Commission. Further details can also be found in Haringey's Third Annual Carbon Report which can be found at www.haringey4020.org.uk

FIGURE 1 – CARBON REDUCTION SCENARIO BY 2020 (KILO TONNES CO₂) AND ACTUAL CO₂ REDUCTION BY 2011

The graph below shows carbon reduction from the 2005 baseline and the carbon reduction scenario by 2020. This is based on the latest national data available (2011) and carbon reduction scenario produced for the Carbon Commission in 2012. A significant proportion of carbon savings is projected to come from low carbon energy generation which contributes to all three of the sectors below. (See www.haringey4020.org.uk for further information).



COMMISSION RECOMMENDATIONS AND PROGRESS TO DATE

1. CREATE BUSINESS MODELS WHICH REINVEST WEALTH BACK INTO THE BOROUGH



An Energy Supply Mutual creating new energy infrastructure.

Establish and invest in an energy supply company formed as a mutual with a remit to operate across a number of north London boroughs to invest in, and deliver schemes.

Key progress to date

The first year of activities has focused on taking the Commission's recommendation and developing this into a detailed business plan. Partnering with LB Enfield and the GLA to build a Strategic Heat Network taking low carbon heat from an 'Energy from Waste' plant to supply affordable heat to major regeneration in Tottenham, including the new Tottenham Hotspur Football Club stadium development.

Engineering design proposals and costing assessments completed in 2013 for the 5km of pipes to supply the hot water include an evaluation of options for heat off take from the North London Waste Authority's Energy from Waste plant at the Edmonton Eco Park, network route analysis, and concept mechanical and controls design of the energy system.

Next steps

Detailed options appraisal of business models with a Cabinet decision expected in summer 2014. Continue to work with partners to identify and develop new and innovative low carbon heat technologies.

A Retrofit Cooperative driving demand and local benefit.

Working with local tradespeople to develop a cross borough co-operative network to install energy efficiency measures in buildings.

Key progress to date

The RetrofitWorks Cooperative, launched in June 2013, now has over 30 SME Associate Members and will deliver their first projects by spring 2014. Uniquely, RetrofitWorks has three tiers of membership; Governance including local authorities and trade bodies, Contact Retrofit Advocates such as community groups, and assessors and, installers. This allows a holistic ground-up approach to drive retrofit locally.

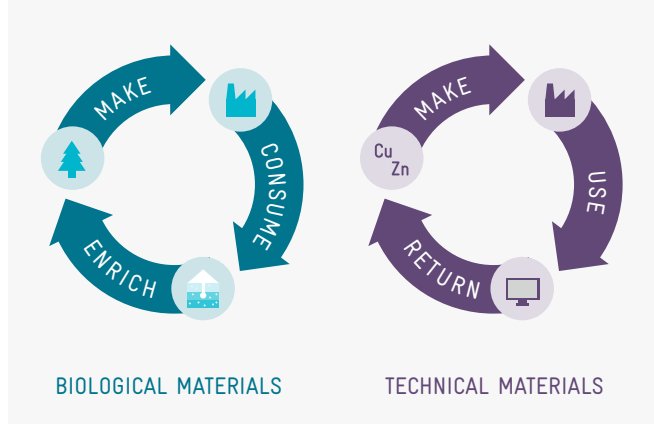
Next steps

Pilot retrofit projects to be completed by RetrofitWorks Cooperative by spring 2014, and investment to help scale up the operations of the cooperative in 2014. A major challenge will be driving take-up of retrofit among "hard to treat" solid wall properties which are common across north London.

The 'RetrofitWorks' Cooperative is a fantastic opportunity for smaller businesses like ours to work together to offer a wide range of home improvements that would not be possible for each individual company.

Mike Ellinas, Director of Axios Energy Ltd

2. BUILDING A LOW CARBON ECONOMY



- Provide incentives and broker partnerships to support carbon neutral and zero waste systems with the support of the Low-Carbon Innovation Labs.
- The Council should show leadership through its procurement strategy, business support services and influence over local business rates to drive development of the local sustainable supply chain and retain value in the local economy.
- Develop partnerships with training providers to develop skills in emerging sustainable industries. In the short term this should focus on energy retrofit and the Green Deal to support the development of the RetrofitWorks cooperative.

Key progress to date

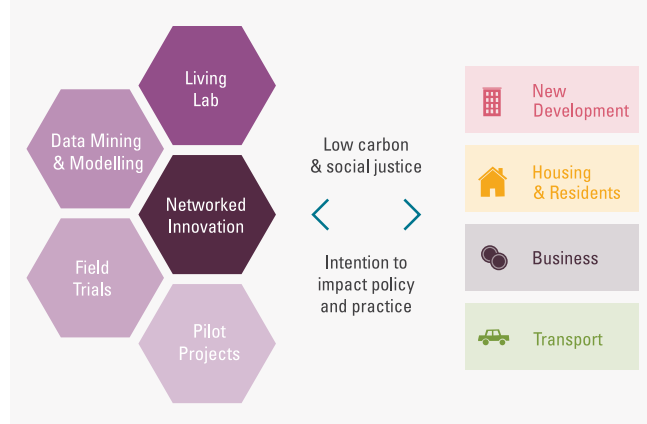
The Council has taken a number of major practical steps to utilise Council levers for change and gear up local sustainable supply chains to the retrofit market. Lease of commercial building premises, business support and procurement are being used to support a low carbon economy more widely.

- **Building the capacity of local sustainable supply chains to deliver retrofit:** The North London SME Retrofit Network, launched in January 2013 includes over 600 SMEs. Businesses receive support to get accreditations and access market opportunities, including the cooperative. Skills and training are supported by local construction training college College of Haringey, Enfield and North East London (CHENEL).
- **Influencing action through provision of Council business support services:** One-to-one consultancy support to SMEs combines general business advice with support to make environmental improvements. Business networks have been created supporting local re-use and up-cycling. A minimum environmental standard is being developed for business networks that will be pioneered by Together North London, a voluntary sector network with 70 members.

Next steps

The Council will develop skills and training initiatives in emerging industries. In the short term, activity will focus on providing European funded support to local SME sector and job seekers to up skill for retrofitting opportunities.

3. BOOSTING INNOVATION



Continuing business as usual will not deliver the scale of change necessary to achieve our goal. The Council will actively promote innovation, and develop prototyping and demonstration projects to effectively launch ideas into borough wide action. This requires working in partnership with a range of lead businesses, higher education and research partner organisations, funders and local sustainability groups to establish Low Carbon Innovation Labs.

Key progress to date

The Council has developed a strategic partnership with Durham University, and has begun to develop a number of collaborative arrangements with others in the higher education sector, private sector and the local community and voluntary sector. The aim is to develop ongoing collaborative research which will provide social and economic opportunities for residents and businesses in the borough.

Next steps

Collaborative partnerships will be publicly launched at an event in January 2014. New partnerships will be developed in 2014 which address key priorities identified by the Commission, and potential business and research partners are invited to contact the Council about their projects. Over the next year the Council will also progress work on a business case to attract a university research centre to locate in the borough.

4. INVEST IN LOW CARBON TRANSPORT



Three priority areas of action were identified:

- “Go Dutch.” Work with local people to identify where segregated cycle lanes, improvements to urban design and smaller scale changes such as cycle parking are needed. Develop supportive policies to create additional space for cycle lanes and engage local groups in DIY streets approach to identify changes needed.
- Develop the market for alternative fuelled vehicles by providing incentives and supporting the growth of new alternative refuelling stations within a new low-carbon enterprise district in the Upper Lee Valley, and use the Council fleet operations to provide an initial customer base for this development. Enable small businesses with fleet vehicles to trial low carbon electric alternatives at no cost. Introduce a zero car parking charge for electric vehicles to help to incentivise take up by residents.
- Develop strong shared transport plans with neighbouring boroughs to tackle the 88 per cent of journeys that start and end outside the borough, and lobby for low carbon public transport (bus and tube line extension).

Key progress to date

Activity has focused on conducting a borough wide cycling infrastructure study, a wider north London cycling strategy, a cross borough smarter travel programme to tackle the majority of trans-borough journeys, and developing proposals for electric vehicle pilots. Haringey’s Cycling and Walking Study assessed the borough’s roads against the London Cycling Campaign’s “Go Dutch” principles and carried out a walking audit of town centres and interchanges.

Next steps

Haringey’s Cycling and Walking Study assessed the Borough’s roads against the London Cycling Campaign’s “Go Dutch” principles and carried out a walking audit of town centres and interchanges. Improvements identified worth £3.2m for cycling and £0.5m for walking will form the basis for future improvements.

A major travel behaviour change programme funded from a European grant will be launched in 2014.

5. STRENGTHEN COMMUNITY ORGANISATIONS



Actions should seek to build on the existing passions and assets within the community. There are a number of innovative community and voluntary sector led initiatives to support sustainable lifestyles. Paid volunteer coordinators will be needed to increase capacity of behaviour change work and can be funded from revenue generating activities (i.e. capital investments and referral fees for the Green Deal) once these are operational. In the interim period additional start-up funding needs to be secured either through grants or core Council funding. Activity should be supported through competitive innovation funding, capacity building, and the provision of support “in kind” from the Council.

Key progress to date

Haringey Council is supporting a pilot solar PV Community share offer on a social housing site, Ferry Lane in Tottenham. The project is led by local residents of the estate working with EN10ERGY, a community energy company (formed as part of the Muswell Hill, Low Carbon Zone project).

A link with the Brixton-based energy cooperative Repowering London has been established to share experiences. The Council will initially finance and install the panels, as part of a wider solar programme being delivered in the borough to achieve significant cost savings.

Next steps

A local share offer is to be launched in 2014. The next round of 4020 Community funding to support small-scale community projects will be launched early 2014.

CARBON COMMISSION RECOMMENDATIONS

ACTIONS COMPLETED 2012-2013

RECOMMENDATION 1: CREATE BUSINESS MODELS WHICH RE-INVEST WEALTH BACK INTO THE BOROUGH

- ① Planning Framework that supports heat networks and retrofit, the Local Plan: Strategic Policies 2013-2016, and Sustainable Design and Construction Special Planning Directive were both Adopted in 2013. ✓
- ② The Council is involved with the GLA led project to pilot a Licence Lite application, which would allow small and medium scale energy producers to sell electricity directly to customers requiring support from OFGEM. ✓
- ③ Haringey's DECC Green Deal Pioneer Places programme led to delivery of 422 Green Deal Assessments in Haringey in 2013 and tested marketing approaches informing the future cooperative. ✓

RECOMMENDATION 2: BUILDING A LOW CARBON ECONOMY

- ① The Council's sustainable procurement policy enabled major energy efficiency improvements in Council assets including Leisure Services (prior to them being outsourced) and establishes a framework for on-going improvements. ✓

RECOMMENDATION 3: BOOSTING INNOVATION

- ① A research partnership with University College London is being developed. A project will be launched which focuses on technology and sustainable living. ✓
- ② Haringey was successfully shortlisted alongside Islington, Camden and the GLA to become a demonstration area for the Energy Technologies Institute (ETI), Smart Systems and Heat programme – a partnership between global energy and engineering companies and Government. ✓

RECOMMENDATION 4: INVEST IN LOW CARBON TRANSPORT

- ① Haringey has been selected by the Mayor of London to be Britain's first electric bike borough. The Council and Transport for London is conducting a feasibility study, focussed on Muswell Hill, to develop the scheme. ✓
- ② A number of "Going Dutch" infrastructure improvements have been completed, such as Haringey's Community Streets approach, increased cycle parking and Quietway (greenways) cycle routes. A consultation to introduce a 20mph speed limit on all Borough roads will report in the spring of 2014. ✓

RECOMMENDATION 5: STRENGTHENING COMMUNITY ORGANISATIONS

- ① Funded Tottenham charity, Living Under One Sun, to train 14 local residents on delivering travel behaviour change. In total 1,424 homes requested further information about sustainable travel. ✓
- ② Living Under One Sun also won the contract to support vulnerable residents to reduce their energy bills. They employed an outreach worker to carry out outreach activities providing advice and promoting collective energy switching. To date over 3,000 residents have received advice at outreach sessions and events, focussed in the Tottenham area. ✓
- ③ A second round of the Haringey 40:20 Community Fund, administered by the 40:20 Steering Group is planned for 2013/14. This will support new eco entrepreneurs and provide funding for voluntary sector initiatives, such as the previously successful 21st Century Homes bid to develop an Estate Agents Pack promoting retrofit. ✓

SUPPORTERS

GET INVOLVED IN HARINGEY 40:20

Contact: haringey4020@haringey.gov.uk

Tel: 020 8489 5691

Carbon Management & Sustainability
Haringey Council

Front cover image shows
low carbon Strategic Heat Network

